

Reclosers

Service Information

Form 6 Recloser Control ProView 4.0.1 Application Software Upgrade Wizard Informational Supplement

S280-70-20

Contents

Product Information	1
Introduction	1
Form 6 Control Upgrade Wizard Version Clarification	1
General Overview	3
Safety Information	2
Hazard Statement Definitions	2
Safety Instructions	2
Procedures and Additional Information	4
Addressing Immediate Data Accessibility Issues	4
How to Identify Modified Form 6 Control ProView 4.0 Software Installations on your PC	5
Restoration Guidelines	6
How to Identify the New Form 6 Control ProView 4.0.1 Software Upgrade Wizard	7
Additional Assistance and Information	7
Service Information	7

PRODUCT INFORMATION

Introduction

Service Information S280-70-20 provides supplemental information and instructions regarding the Upgrade Wizard included on the standard Form 6 recloser control ProView 4.0.1 application software CD.

These instructions are to be used in conjunction with the Upgrade Wizard Instructions included on your CD and the programming instructions for your Form 6 recloser control:

- *Service Information S280-70-4 Form 6 Recloser Control Programming Guide*
- *Service Information S280-70-9 Form 6 Triple-Single Recloser Control Programming Guide*

Read This Manual First

Read and understand the contents of this manual and follow all locally approved procedures and safety practices before installing or operating this equipment.

Additional Information

These instructions cannot cover all details or variations in the equipment, procedures, or process described, nor provide directions for meeting every possible contingency during installation, operation, or maintenance. When additional information is desired to satisfy a problem not covered sufficiently for the user's purpose, contact your Cooper Power Systems representative.

Form 6 Control Upgrade Wizard Version Clarification

Cooper Power Systems released ProView 4.0.1 (P/N: 6A00182610 Rev. 03) application software for the Form 6 recloser control in November 2007. This software release resolves structure differences that occurred with one of the three modes of the upgrade wizard included with ProView 4.0.1 (P/N: 6A00182610 Rev. 02) application software released in October 2006. The ProView 4.0.1 Rev. 03 application software CD provides the latest installation files for the program and accompanying ProView 4.0-4.0.1 Software Upgrade Wizard for the standard release of the Form 6 recloser control.

There are no other updates when compared to the ProView 4.0.1 Rev. 02 software and the ProView software remains unchanged. This document outlines information regarding the Upgrade Wizard update.



SAFETY FOR LIFE



Cooper Power Systems products meet or exceed all applicable industry standards relating to product safety. We actively promote safe practices in the use and maintenance of our products through our service literature, instructional training programs, and the continuous efforts of all Cooper Power Systems employees involved in product design, manufacture, marketing, and service.

We strongly urge that you always follow all locally approved safety procedures and safety instructions when working around high voltage lines and equipment and support our “Safety For Life” mission.

SAFETY INFORMATION

The instructions in this manual are not intended as a substitute for proper training or adequate experience in the safe operation of the equipment described. Only competent technicians, who are familiar with this equipment should install, operate, and service it.


A competent technician has these qualifications:


- *Is thoroughly familiar with these instructions.*
- *Is trained in industry-accepted high- and low-voltage safe operating practices and procedures.*
- *Is trained and authorized to energize, de-energize, clear, and ground power distribution equipment.*
- *Is trained in the care and use of protective equipment such as flash clothing, safety glasses, face shield, hard hat, rubber gloves, hotstick, etc.*


Following is important safety information. For safe installation and operation of this equipment, be sure to read and understand all cautions and warnings.

Hazard Statement Definitions

This manual may contain four types of hazard statements:

 **DANGER:** Indicates an imminently hazardous situation which, if not avoided, will result in death or serious injury.


 **WARNING:** Indicates a potentially hazardous situation which, if not avoided, could result in death or serious injury.

 **CAUTION:** Indicates a potentially hazardous situation which, if not avoided, may result in minor or moderate injury.


CAUTION: Indicates a potentially hazardous situation which, if not avoided, may result in equipment damage only.

Safety Instructions


Following are general caution and warning statements that apply to this equipment. Additional statements, related to specific tasks and procedures, are located throughout the manual.

 **DANGER:** Hazardous voltage. Contact with hazardous voltage will cause death or severe personal injury. Follow all locally approved safety procedures when working around high- and low-voltage lines and equipment.


G103.3

 **WARNING:** Before installing, operating, maintaining, or testing this equipment, carefully read and understand the contents of this manual. Improper operation, handling, or maintenance can result in death, severe personal injury, and equipment damage.

G101.0

 **WARNING:** This equipment is not intended to protect human life. Follow all locally approved procedures and safety practices when installing or operating this equipment. Failure to comply may result in death, severe personal injury, and equipment damage.

G102.1

 **WARNING:** Power distribution and transmission equipment must be properly selected for the intended application. It must be installed and serviced by competent personnel who have been trained and understand proper safety procedures. These instructions are written for such personnel and are not a substitute for adequate training and experience in safety procedures. Failure to properly select, install, or maintain power distribution and transmission equipment can result in death, severe personal injury, and equipment damage.

G122.3

General Overview

Along with the release of ProView 4.0.1 Rev. 02 software for the Form 6 recloser control in 2006, a separate ProView 4.0.1 software upgrade wizard was included on the CD to accommodate ProView 4.0 software users who upgrade to ProView 4.0.1 software.

Date Modification Issue

When the “Convert a Form 6 V4.0 scheme file into a Form 6 V4.0.1 scheme file” Upgrade Wizard option is used with the ProView 4.0.1 Rev. 02 software for the Form 6 control, some files in the ProView 4.0 software installation are modified on the local computer. If this same personal computer (PC) is used to establish communications with a Form 6 control that is using ProView 4.0 software, the comparison dialog will indicate a structure difference (even if the scheme structures are the same).

From this point, the ability to download settings changes to the control and establish “online” communication (required for accessing Sequence of Events and Data Profiler information) can only be established if the local PC’s modified ProView 4.0 software scheme structure is downloaded to the device. However, when downloading this modified scheme structure, all volatile data such as oscillography, data profiler, etc. in the device will be erased when the structure download causes the control to reboot.

If the modified structure is downloaded to the device, the affected device will report a structure difference whenever a scheme comparison is performed with an unmodified ProView 4.0 software PC installation. This occurs because the control’s structure has been altered to reflect the scheme structure of the modified ProView software installation. Thus, “online” communication will be unavailable to any computer running an original, unmodified installation of ProView 4.0 software if the structure is downloaded from the modified installation to a connected control.

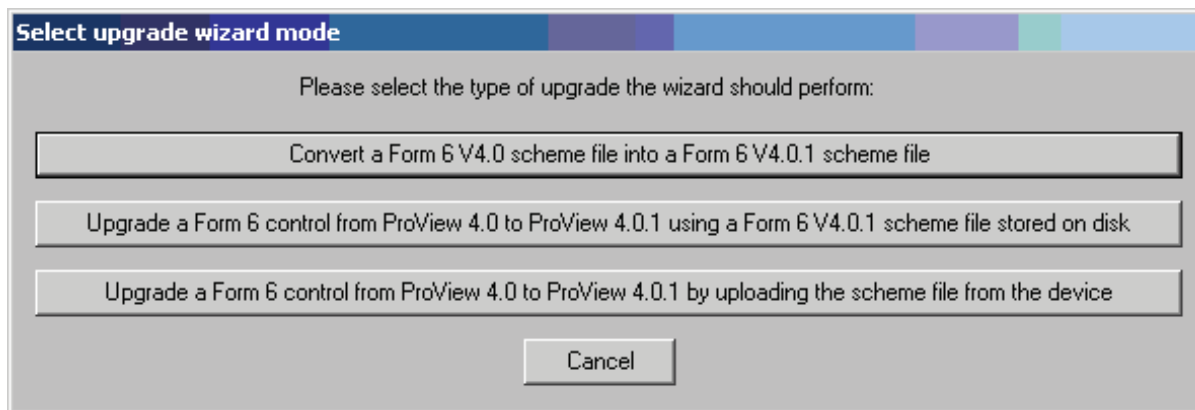


Figure 1.
Original ProView 4.0 to 4.0.1 upgrade wizard mode selection screen (included with ProView 4.0.1 Rev. 02 application software for the Form 6 recloser control).

PROCEDURES AND ADDITIONAL INFORMATION

Addressing Immediate Data Accessibility Issues

The procedures explained in this section are intended for users requiring access to Oscillographic Events and Sequence of Events data from a Form 6 control that shows unequal structure when a comparison is performed in the ProView software.

Note: Data Profiler data is not retrievable.

IMPORTANT: You must read and understand all of the information contained in this document before performing any of the procedures outlined in this document. This will prevent data loss while addressing the Upgrade Wizard issue.

In the event that a structure difference is preventing the retrieval of data from the Form 6 control through ProView software, follow these steps to obtain Oscillographic Events and Sequence of Events (SOE) data from a non-custom, standard app-core Form 6 control:

1. Start ProView 4.0 software and select File>Open Scheme from Device...
2. Connect to the device via the appropriate connection.
3. Click Done on the scheme comparison screen.
 - To obtain Oscillographic Event data, go to step 4.
 - To obtain SOE data only, go to step 5.
4. Go to the Manage menu and choose Oscillographic Events. Any event files that are available for upload from the device will be listed in the bottom drop-down menu.

Click the Upload All button to obtain all the available event files.

When finished, the oscillography information has been successfully saved to the PC.

Note: The integrity of signal and contact names in SOE data cannot be guaranteed when the events are obtained with unequal scheme structures. The most reliable readings will be obtained by following the above procedure to open the scheme file from the connected device to ensure that structure differences are minimized.

To obtain Sequence of Events data, proceed to step 5. Otherwise, disconnect from the control. Scheme structure has not been modified at this point.

5. To obtain Sequence of Events data while experiencing an unequal scheme structure condition, the scheme structure from the computer must be downloaded to the connected device.

IMPORTANT: Read the remainder of this document to fully understand this process and its inherent consequences before completing this procedure.

- a. Click on the Scheme Comparison button.



- b. Click the Download to Device button. This will download the scheme structure from the PC to the currently connected control.

CAUTION: System misoperation. The process of downloading a new scheme or settings will cause this device to stop functioning as a protective device for a period of approximately 8 seconds. Safe operating practices must be observed while downloading schemes or settings. Failure to comply can result in system misoperation.

T299.1

- c. When the download is completed, the device will reboot, and the structure comparison will show equal structure on the computer and device.

Note: Data Profiler data and Oscillographic Events will be deleted when the device reboots.

- d. The Sequence of Events data can now be retrieved by clicking the Go Online button and choosing Display>Sequence of Events.

How to Identify Modified Form 6 Control ProView 4.0 Software Installations on your PC

If the top button of the upgrade wizard has ever been used to convert a Form 6 control ProView 4.0 software scheme to a ProView 4.0.1 software scheme on a particular computer, then it is likely that the ProView 4.0 software installation on that PC is modified.

To positively identify this condition, the following steps must be followed:

1. Start ProView 4.0 software and load the default Form 6 control scheme (F6-4.0 default (read only).f6e).

Select the Manage menu and click on Oscillographic Events to force a scheme compilation.

When completed, close the ProView software.

2. Use Microsoft® software Windows® operating system Explorer to navigate to the C:\Program Files\Cooper\Proview40\Form 6\Libfiles folder on your PC (Figure 2).

Note: This is the default recommended installation path. Your direct path may differ.

3. Sort the files in the \Libfiles\ folder by modified date with the most recent files first (descending order).
4. Check to see if any of the files list a modification date more recent than 10/24/2003.
5. If any of the files have modification dates later than 10/24/2003, then it is likely that the files have been modified as a result of using the Upgrade Wizard's "Convert a Form 6 V4.0 scheme file into a Form 6 V4.0.1 scheme file" option.

Figure 2 shows an example of the \Libfiles\ folder, in which files were modified (see file dates) when a ProView 4.0 software scheme was converted to ProView 4.0.1 software scheme using the "Convert a Form 6 V4.0 scheme file into a Form 6 V4.0.1 scheme file" option of the upgrade wizard.

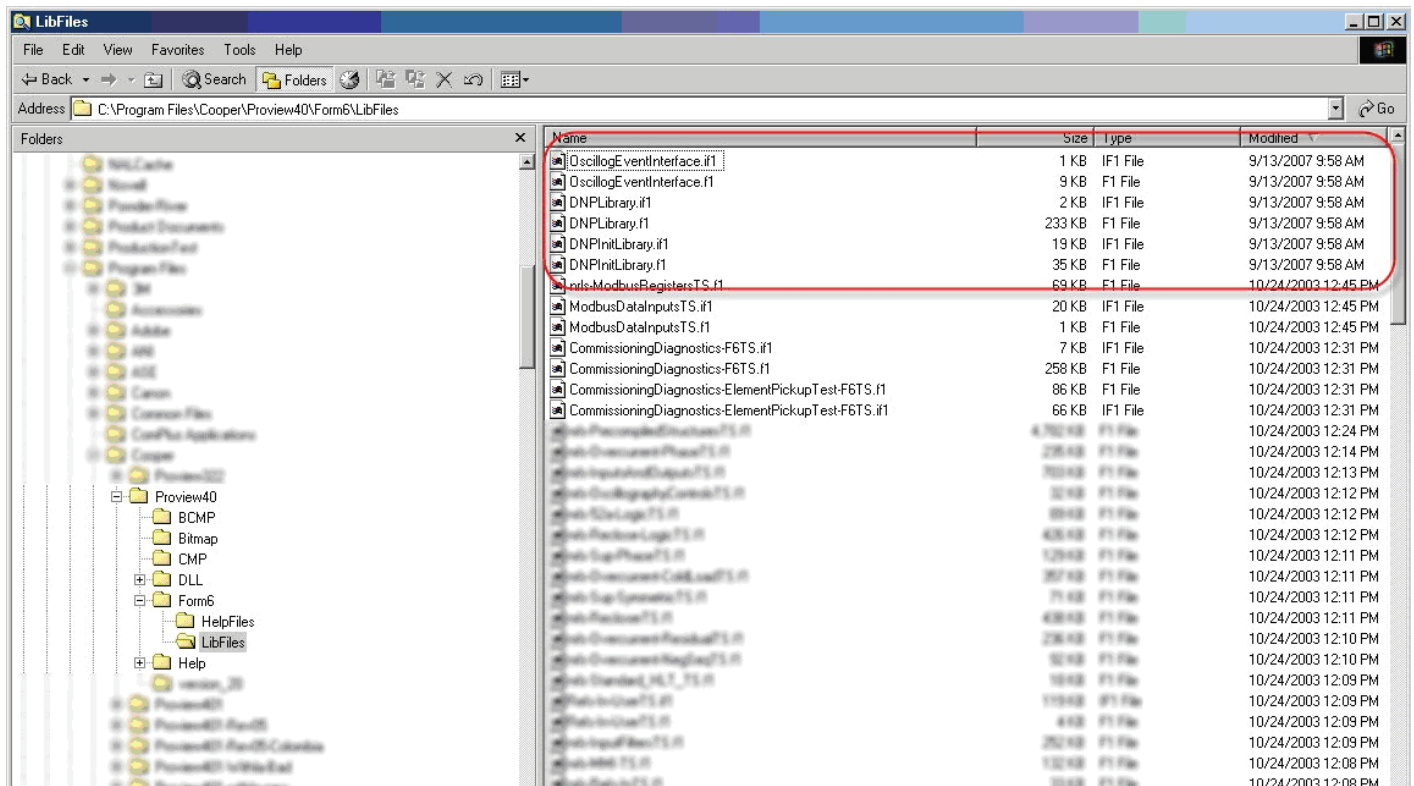


Figure 2. Modified files example.

Restoration Guidelines

WARNING: Equipment misoperation. Use of an incompatible or inappropriate settings file, scheme file, or custom software file in a control, relay, recloser, or switch can result in equipment misoperation leading to equipment damage, severe personal injury, or death. G140.1

CAUTION: Protective equipment misoperation. Before downloading configuration files or settings to the equipment, verify that the files and settings are correct for the location and application. Downloading configuration files or settings designed for a different location or application can result in severe personal injury and equipment damage. G133.1

CAUTION: Equipment misoperation. Use of the ProView operating system may result in the creation of many combinations of setting files, scheme files, and custom software files. Many of these combinations can be downloaded into any device using the ProView operating system. The user must ensure that the proper combination of software modules is created and downloaded to the correct device for the application. G148.0

CAUTION: System misoperation. The process of downloading a new scheme or settings will cause this device to stop functioning as a protective device for a period of approximately 8 seconds. Safe operating practices must be observed while downloading schemes or settings. Failure to comply can result in system misoperation. T299.1

For any installed base consisting of computers and controls using ProView 4.0 and ProView 4.0.1 software for the Form 6 control, these are the three main steps for restoration:

1. Remove or replace the original version of the upgrade wizard in all Form 6 control ProView 4.0.1 software installations on your PC(s) via one of these two methods:
 - Delete the original (ProView 4.0.1 CD, P/N 6A00182610 Rev. 02) Form 6 control Upgrade Wizard executable. (C:\Program Files\Cooper\Proview401\proview401_Wizard_F6-F6TS.exe) or
 - Re-install the new release of Form 6 control ProView 4.0.1 software with the updated Upgrade Wizard. (ProView 4.0.1 CD, P/N 6A00182610 Rev. 03).
2. Reinstall Form 6 control ProView 4.0 software on all PCs.

This will eliminate all instances of modified ProView 4.0 software PC installations by resetting the affected file dates back to factory defaults.
3. Use the newly reinstalled Form 6 control ProView 4.0 software installation to re-download scheme structures to all ProView 4.0 software Form 6 controls.

This will ensure that all ProView 4.0 software Form 6 controls are returned to a default unmodified scheme structure.

To avoid future modification to existing Form 6 control ProView 4.0 software installations, do not use the “Convert a Form 6 V4.0 scheme file into a Form 6 V4.0.1 scheme file” option (Figure 3) of the Form 6 control upgrade wizard included with Form 6 control ProView 4.0.1 CD P/N 6A00182610 Rev. 02.

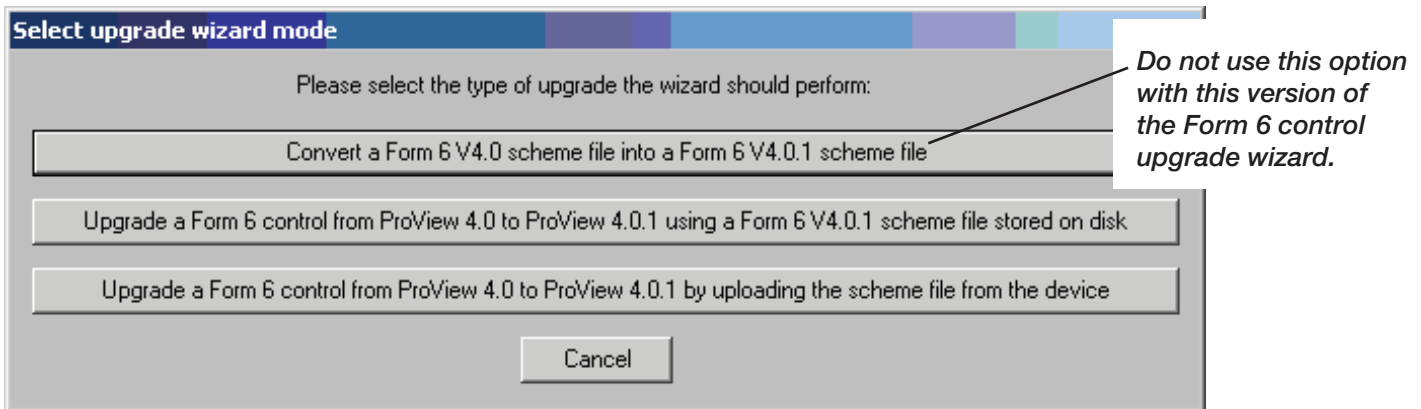


Figure 3. Original ProView 4.0 to 4.0.1 upgrade wizard mode selection screen (included with ProView 4.0.1 Rev. 02 application software for the Form 6 recloser control).

How to Identify the New Form 6 Control ProView 4.0.1 Software Upgrade Wizard

The new Form 6 control Upgrade Wizard displays the text “Version 1.1” in the lower-right corner of the main dialog (Figure 4). You can use the “Convert a Form 6 V4.0 scheme file into a Form 6 V4.0.1 scheme file” option in the Form 6 control Upgrade Wizard Version 1.1 included with ProView 4.0.1 software P/N 6A00182610 Rev. 03 CD. The modification issues described in this document will not occur with this updated version.

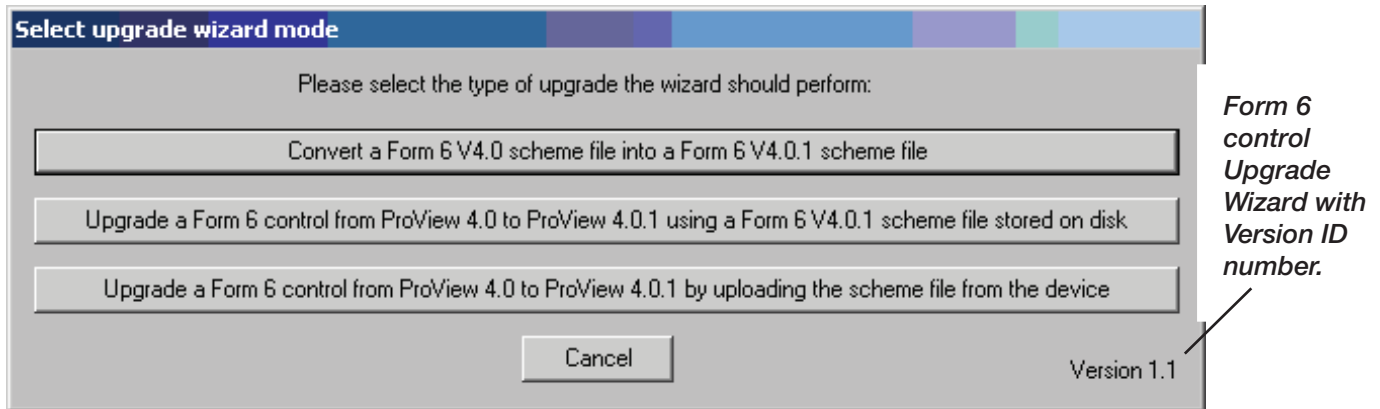


Figure 4. New ProView 4.0 to 4.0.1 upgrade wizard mode selection screen with Version ID number (included with ProView 4.0.1 Rev. 03 application software for the Form 6 recloser control).

Additional Assistance and Information

If additional assistance or information is required, all inquiries should be directed to the Switchgear Support Group (SSG). The SSG can be reached by phone at (800) 497-5953, or by e-mail at SSG@CooperIndustries.com.

Service Information

Refer to the Service Information that was provided with your Form 6 recloser control (*Service Information S280-70-# series*) for additional information regarding control features, communications, back panel, installation, accessories, and testing.



©2008 Cooper Power Systems, Inc., or its affiliates.
ProView is a valuable trademark of Cooper Industries in the U.S. and other countries. You are not permitted to use Cooper trademarks without the prior written consent of Cooper Industries.
Microsoft® and Windows® are either registered trademarks or trademarks of Microsoft Corporation in the United States and/or other countries.

 **COOPER** Power Systems

2300 Badger Drive
Waukesha, WI 53188
www.cooperpower.com
