

SurvalentONE

SCADA for Water

Real-time automated monitoring
& control of network infrastructure
for improved insight and productivity



Survalent.

Utiliverse™ ecosystem

With SurvalentONE SCADA, you can significantly improve network and system control, increase utilization, and cut costs.

Operating water/wastewater treatment facilities requires a high degree of analysis, planning, oversight, and coordination that is difficult to achieve without the support of a modern, centralized Supervisory Control and Data Acquisition (SCADA) system.

SurvalentONE SCADA provides a real-time overview of an entire network or system, as well as detailed insight into the current and historical state of individual field devices. As your network grows and evolves, SurvalentONE SCADA can grow with it, providing a solid foundation for Survalent's extensive suite of applications.

Featuring the advanced, intuitive SmartVU GUI, SurvalentONE SCADA is interoperable with devices from all manufacturers, supports a large suite of industry-standard protocols, and supports up to quad redundancy which virtually eliminates downtime risk.

Improve Network Control and Productivity

SurvalentONE SCADA offers unparalleled visibility into your water/wastewater networks and systems, dramatically expanding your awareness of daily operations. Collecting and analyzing network data with SurvalentONE SCADA enables you to detect problems before they occur and make the necessary adjustments to prevent faults from arising. It automates routine system administration, maintenance, and recovery tasks which allows you to improve productivity in and out of the control room.

Greater Insight

SmartVU is an intuitive, Windows-based GUI that simplifies how you manage, edit and share information. You can observe all aspects of the network in real-time – giving you the insight and control you need to effectively manage your data.

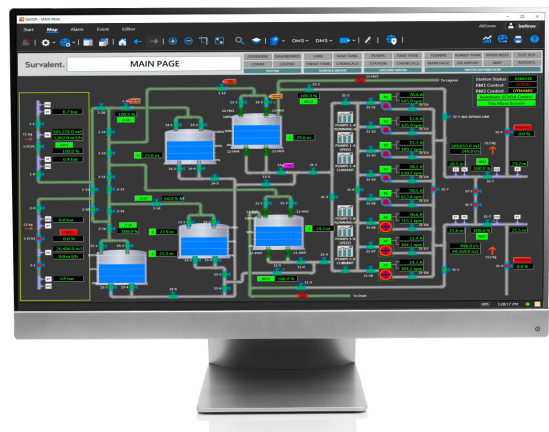
SurvalentONE SCADA obtains measured data from data links and remote terminal units (RTU), validates it, converts it as necessary, and stores it in the appropriate real-time and historical databases. Data can also be imported from external systems and integrated with local data to provide you with a more complete analysis of your network's condition.

By leveraging SmartVU's features and advanced visualization

capabilities, you have quick access to maps, alarms, operation logs, and analysis tools and editing features, and the ability to present data in a variety of formats. You can use cartographic or geographical maps for a view of the extended area, as well as process diagrams for plant and pump stations.

SCADA Protocols

SurvalentONE SCADA supports a wide range of open and legacy protocols. With the database editor, you can define key parameters for each communication line, and maintain communication statistics for each RTU. You can then incorporate these statistics in configurable displays, reports, and alarms.



Benefits

- Increased operational efficiency
- Improved situational awareness for faster, more informed decision-making
- Cost savings due to remote monitoring and control of field devices

Key Features

- Support for a wide range of industry-standard communication protocols
- Advanced authentication and access control
- Secure, multi-level tagging to inhibit control of devices
- Extensive, configurable alarm management
- Flexible report creation, formatting, and scheduling with access to historical data collection and the Event Data Recorder

Optional SCADA Applications

These applications allow you to increase the volume of network data that you collect and expand your ability to analyze that data, for more informed decision making. Easy to install and use, these applications are designed to facilitate communication within your utility by notifying key personnel about significant events and efficiently sharing information with internal stakeholders.

▪ GIS Wizard

Easily import accurate data from your GIS system into your SurvalentONE SCADA application. The GIS Wizard guides you through the process, enabling you to identify errors and inconsistencies prior to import for reliable data within your SurvalentONE applications.

▪ IED Wizard and Control Panel

Configure your intelligent electronic device (IED) and Control Panel settings more efficiently using Survalent's IED and Control Panel templates. The IED Wizard creates the required points in the SCADA system database for your chosen IED, and generates telemetry and control addresses automatically. The IED Control Panel allows you to interact with a graphic representation of your data concentrators, PLC, meters (e.g. volumetric meters, flow meters), and RTUs, as though you're standing in front of them.

▪ Network Topology Processor

Quickly understand the status of your network with a configurable, color-coded view of system flows, valve positions and statuses, tank levels, flow direction, etc.

▪ OSIsoft PI Historian Interface

Store large quantities of historical data off-site and easily retrieve it for corporate access, reporting, auditing, and forecasting using SurvalentONE SCADA's seamless integration with PI Historian by OSIsoft.

▪ Replicator, Archiver & Advanced Historian Reporting Options

Gain valuable insight into your network operations by searching historical data, using the Archiver application.

Replicator allows you to easily replicate database tables, fields, and historical data sets, as well as extend the database into a SQL format for outside control room collaboration.

Advanced Historian is a high-speed historian application that creates a secure record of your points database to help you better understand your network's behavior, and to make more informed decisions.

▪ SCADA Add-In

Generate the exact reports, graphs, and queries you need without IT intervention. Survalent's SCADA Add-In application lets you create and share reports in MS Excel using real-time and historical data.

Better Software. Better Decisions.

With Survalent, you can control your critical network operations with confidence. We're the most trusted provider of advanced distribution management systems (ADMS) and substation automation for electric, water/wastewater, oil & gas, renewable energy, and transit utilities across the globe.

Over 700 utilities in 40 countries rely on the SurvalentONE platform to effectively operate, monitor, analyze, restore, and optimize operations. By supporting critical utility operations with a fully integrated solution, our customers have significantly improved operational efficiencies, customer satisfaction and network reliability. Our comprehensive substation automation solution, Survalent StationCentral, delivers advanced control and monitoring for enhanced network performance and protection.

Our unwavering commitment to excellence and to our customers has been the key to our success for over 60 years.

100% Project Delivery. We Guarantee It. Ask Us How.

Survalent.

info@survalent.com • survalent.com • 905-826-5000

Utiliverse™ ecosystem